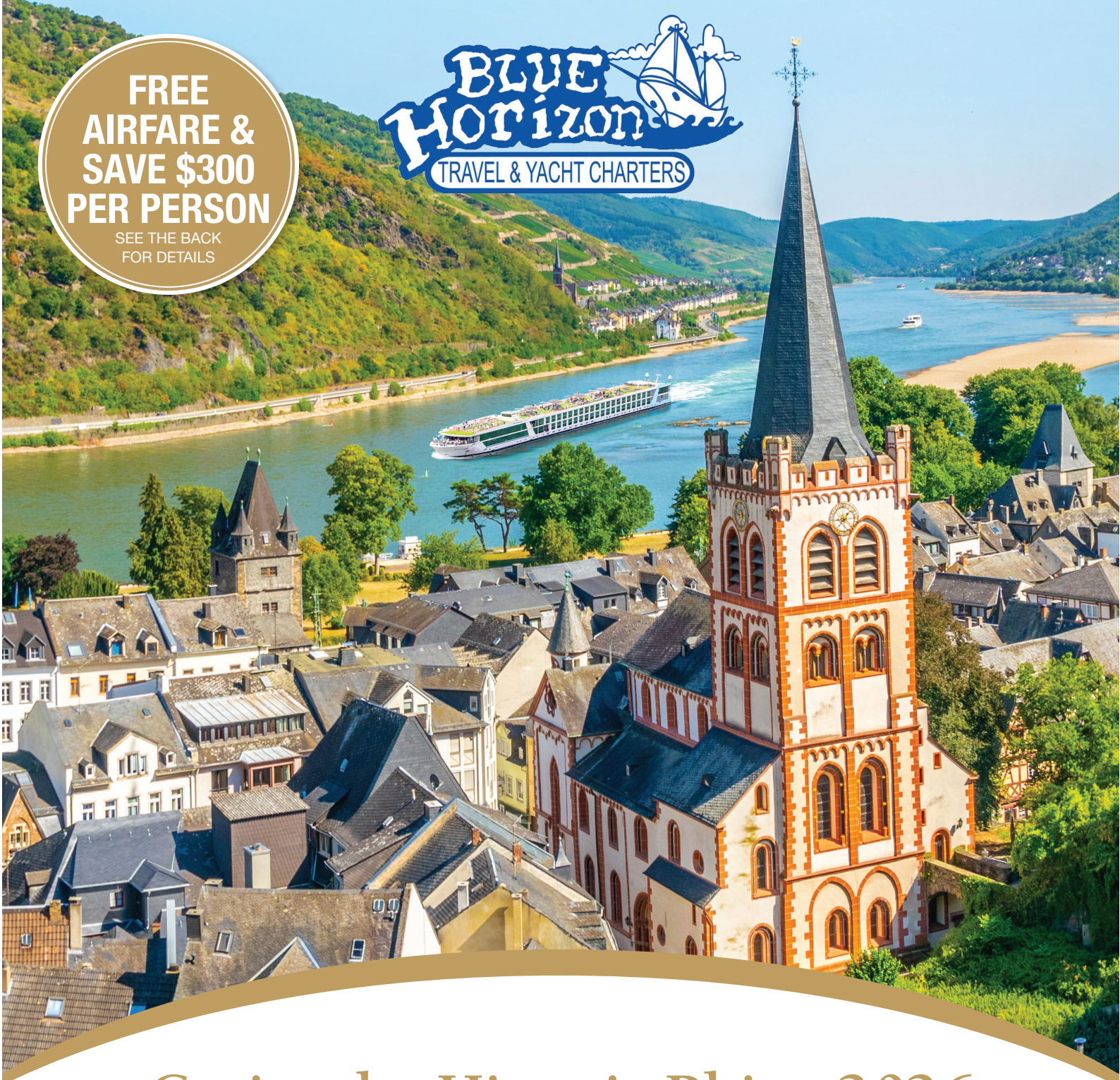


**FREE  
AIRFARE &  
SAVE \$300  
PER PERSON**  
SEE THE BACK  
FOR DETAILS



# Cruise the Historic Rhine 2026

the Netherlands • Germany • France • Switzerland

Tour Dates: June 19<sup>th</sup> – 29<sup>th</sup>, 2026

GERMAN AMERICAN HERITAGE  
center & museum

# Cruise the Historic Rhine 2026



Relax during a glass-top canal cruise through Amsterdam



Charming scenes abound in Strasbourg, France

**June 19, 2026 Depart the USA:** Fly from Quad Cities or your preferred gateway on your overnight flight to Amsterdam, the Netherlands.

**June 20, 2026 Amsterdam, the Netherlands:** Welcome to Amsterdam, a fascinating 700-year-old city of picturesque canals, world class museums, and cafés. Flights should arrive by 4:00pm. You will be met and transferred from the airport to your luxurious Emerald Cruises Star-Ship. Become acquainted with the amenities of your ship, or begin exploring the city. This evening, join your fellow travelers for dinner onboard. **Meal: D**

**June 21, 2026 Amsterdam:** Experience the city on a canal cruise aboard a glass-top boat. Traverse the UNESCO World Heritage network of canals, passing Roman patrician and ornate merchant houses from the Dutch Golden Age. Alternatively, join a guided bike tour to Waterland, passing through quintessential Dutch landscapes of quaint villages and windmills. Tonight, enjoy a welcome reception and gala dinner. **Meals: B, L, D**  
**EmeraldACTIVE:** Guided bike tour to Waterland (instead of canal cruise)

**June 22, 2026 Cologne, Germany:** Cruise along the Rhine River to Cologne. The city is one of Germany's oldest and famous for its magnificent gothic cathedral - a UNESCO World Heritage Site. Join your local guide for an included walking tour of the city, traversing quaint alleyways, seeing historic monuments, and touching on the historical charms of the Old Town. After the tour, consider checking out the MotorWorld Automotive Museum or the Chocolate Museum. Enjoy local entertainment onboard this evening. **Meals: B, L, D**

**June 23, 2026 Koblenz:** Cruise to the 2000-year-old town of Koblenz, situated at the confluence of the Rhine and Moselle Rivers. Enjoy a walking tour of Koblenz seeing the German Corner where the 2 rivers meet, the Church of Our Lady, and visit the Ehrenbreitstein Fortress by cable car on

the opposite side of the river. This fortress was part of the Prussian defense against the French in the 19th century and later used as a headquarters for the American military during WWII. This afternoon, sail through the spectacular UNESCO World Heritage Rhine Gorge. Pass countless medieval castles and vineyards lining the shores of this section of the river, with photo opportunities around every bend. See the infamous Lorelei statue and Pfalzgrafenstein Castle, built on an island in the middle of the river as a medieval toll station. **Meals: B, L, D**  
**DiscoverMORE:** Moselle & Cochem (Reichsburg) Castle Visit (additional expense)

NOTE: You can choose either the included tour of Koblenz OR the DiscoverMORE option, as both tours operate at the same time

**June 24, 2026 Ludwigshafen / Heidelberg:** Continue sailing to the town of Ludwigshafen, docking site for Heidelberg. Travel by coach to Heidelberg for a guided visit of the castle ruins and a walk along the cobblestone lanes of the old town. Perhaps visit the German Apothecary Museum in the castle. This evening, attend a private concert as an EmeraldPLUS activity. **Meals: B, L, D**

**EmeraldACTIVE:** Hike from Mount Königstuhl to Heidelberg  
**EmeraldPLUS:** Private Evening Concert Performance

**June 25, 2026 Kehl / Strasbourg, France:** Once docked in Kehl, travel by coach across the river to Strasbourg, the capital of the Alsace region in France. Your guided walking tour includes the Grande Île - the historical city center and UNESCO World Heritage Site. Known for its medieval black and white timber-framed buildings, old tanning houses, baroque sandstone buildings, canals and river locks, the city's star attraction is the cathedral, dominating the main square. Enjoy free time this afternoon to continue exploring this charming town on your own. Tonight, local entertainment is provided onboard. **Meals: B, L, D**



The historic Chapel Bridge crosses the Reuss River in Lucerne, Switzerland

**June 26, 2026 Breisach, Germany / Freiburg:** On today's adventure, visit the city of Freiburg, considered the 'capital of the Black Forest'. Aside from seeing the lovely sights, sample true Black Forest delicacies from the lively market in the city center near the main cathedral. Alternatively, join a guided bike tour in Breisach. **Meals: B, L, D**

**EmeraldPLUS:** Guided tour of Freiburg with tasting

**EmeraldACTIVE:** Guided bike tour in Breisach

**June 27, 2026 Basel, Switzerland – Lucerne:** After breakfast, disembark the ship in Basel and begin your Swiss adventure. Depart by coach to Lucerne, a picturesque town surrounded by mountains and meadows. An included walking tour highlights the city's landmark - the famous 14th-century Chapel Bridge. See the 17th-century Renaissance Town Hall and town squares, all set amongst the beautiful backdrop of the Swiss Alps. The remainder of the day is available to visit one of the city's museums: the Richard Wagner Museum, the Swiss Museum of Transport or the History Museum of Lucerne. **Meal: B**

**June 28, 2026 Lucerne:** Your last day is left free of planned activities. Explore a local museum on your own, or join the optional excursion to Mt. Pilatus – a mountain overlooking Lucerne that offers a unique alpine experience! This evening, get together for an included dinner at the hotel. **Meals: B, D**

**DiscoverMORE:** Mt. Pilatus (additional expense)

**June 29, 2026 Lucerne / USA:** Bid 'auf wiedersehen' to Europe and return home with memories of life enriching experiences from your European adventure and cruise along the Rhine River. **Meal: B**

\*Itinerary is subject to change at any time

### CRUISE AND HOTEL ACCOMMODATIONS

**Days 2 through 8** – Aboard an Emerald Cruises Star-Ship

**Days 9 and 10** – Hotel Europe or similar, Lucerne, Switzerland

Pre-cruise hotel stays available in Amsterdam. Call for details.



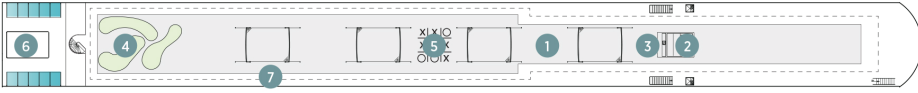
## Exceptional Inclusions

- **23 Meals:** 9 breakfasts, 6 lunches and 8 dinners
- **Airport transfers** on tour dates when air is provided by Mayflower Cruises & Tours
- **Visit four countries**
- **Seven-nights in a suite or stateroom** of your choice onboard the vessel
- **First-class service** by an English-speaking crew
- **Onboard Activity Manager** will support all EmeraldACTIVE excursions and host daily onboard wellness activities, games, classes and evening entertainment
- **All gratuities included**
- **Shore excursions** with English-speaking local guides
- **Visit UNESCO World Heritage Sites**
- **Personal listening device** for shore excursions
- **All meals included** onboard
- **Variety of international cuisine**
- **Complimentary regional wines, beer and soft drinks** with onboard lunches and dinners
- **Complimentary bottled water** in your stateroom
- **Complimentary WiFi onboard**
- **Complimentary bicycles onboard** for use ashore
- **All port charges included**
- **Two-night hotel stay and touring in Lucerne**

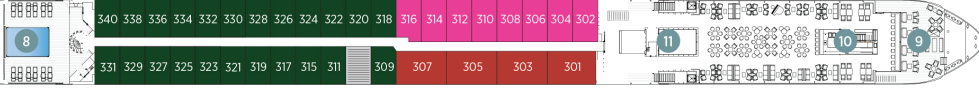
# Emerald Cruises Star-Ships

**Built:** 2014-20 **Speed:** 15.5 mph **Staterooms:** 19 **Suites:** 72 **Length:** 443 ft. **Crew:** 47

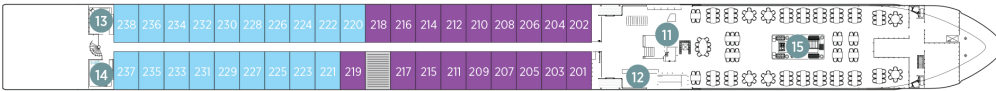
## SUN DECK



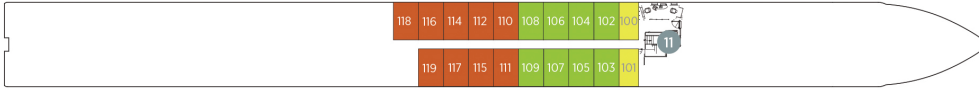
## HORIZON DECK



## VISTA DECK

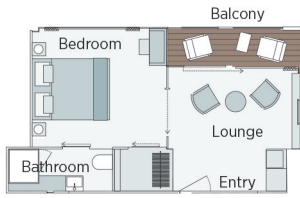


## RIVIERA DECK



## Public Areas and Ship Amenities

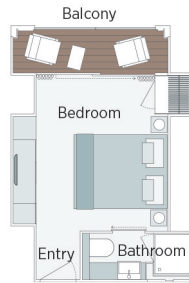
- 1 Sun Deck with Deck Chairs
- 2 Navigation Bridge
- 3 Sky Barbeque
- 4 Golf Putting Green
- 5 Games Area
- 6 Retractable Glass Roof
- 7 Walking Track
- 8 Daytime Pool / Evening Cinema
- 9 The Terrace
- 10 Horizon Bar and Lounge
- 11 Elevator
- 12 Reception
- 13 Wellness Area
- 14 Fitness Area
- 15 Reflections Restaurant



**Owner's One-Bedroom Suite**

315ft<sup>2</sup>

**CAT SA**



**Grand Balcony Suite**

210ft<sup>2</sup>

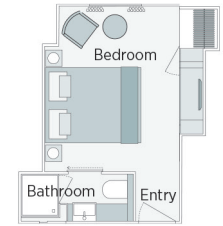
**CAT S**



**Panorama Balcony Suite**

180ft<sup>2</sup>

**CAT A CAT B CAT C**



**Emerald Stateroom**

162ft<sup>2</sup>

**CAT D CAT E**

**Departure Date:** June 19 – 29  
**Cruise the Historic Rhine**

|     |                           | JUN 19  |                   |
|-----|---------------------------|---------|-------------------|
| CAT | STATEROOM / SUITE         | DECK    |                   |
| E   | Emerald Stateroom         | Riviera | \$5,735 + \$4,079 |
| D   | Emerald Stateroom         | Riviera | \$5,849 + \$4,165 |
| C   | Panorama Balcony Suite    | Vista   | \$6,505 + \$4,655 |
| B   | Panorama Balcony Suite    | Vista   | \$6,799 + \$4,875 |
| A   | Panorama Balcony Suite    | Horizon | \$7,105 + \$5,105 |
| S   | Grand Balcony Suite       | Horizon | \$7,575 N/A       |
| SA  | Owner's One-Bedroom Suite | Horizon | \$8,535 N/A       |

**FREE AIRFARE from MLI (Quad Cities Airport \$1750), when reservations are made by June 30<sup>th</sup>, 2025.**

**(Ask about other gateways.)**

Starting on July 1<sup>st</sup>, please call for the most current air promotion pricing details.

*Air itineraries may not be available until documents are received. Air seats are assigned by the airline for the entire group and may not be available until airport check-in. Seat changes can only be attempted at the airport and may not be possible. If specific seat assignments are vital to your reservation, we recommend booking air on your own rather than booking air with the group.*

**Save \$300 per person when you book by December 31<sup>st</sup>, 2024!**

**Book Early and choose your Cabin!**

### Travelers Protection Plan (TPP) for River Cruises - \$569 per person (Optional)

This nonrefundable fee will provide a refund to you during the instance that you have to cancel your trip. The cancellation has to be for a covered reason (see Plan for details on coverage) and we have to be notified at least one day prior to departure. If you must leave the tour early due to personal illness or the illness or death of an immediate family member, TPP will provide a refund for any unused services after the departure of the tour. Other benefits include medical expenses for illness and injury, emergency transportation, 24 hour hot line and lost or stolen baggage assistance. Return air transportation is included ONLY if your air tickets are purchased through Mayflower Cruises & Tours. Please review the Plan for details on coverage. Should you choose not to purchase our TPP, the following per person cancellation charges will be assessed for all tours and optional excursion costs:

- 91 days or more prior to departure: Deposit amount
- 90 days to day of departure: 100% of total tour
- No refund on unused portions of the tour

### TOUR ACTIVITY LEVEL



**Exclusions:** Mayflower Cruises & Tours reserves the right to alter its Refund and Cancellation Policy when a substantial amount of cancellation or postponement of travel is attributable to: conditions resulting from an act of God, natural or man-made disaster, fire, government action, civil disorder, war, hostilities between nations, or unavailability of transportation through no fault of Mayflower Cruises & Tours. Plan and benefits offered and administered by Trip Mate, Inc.

FOR RESERVATIONS OR INFORMATION CONTACT:

**Linda Meadors**  
**Blue Horizon Travel**  
**309-235-5806**

**Linda@bluehorizon.net**

See [www.bluehorizon.net](http://www.bluehorizon.net)  
and [www.GAHC.org](http://www.GAHC.org) for more details!

